

Principle Applications

Water circulation, re-circulation & cooling duties in beverage, laboratory, agricultural, print, photographic & industrial processing applications

Wetted Materials

PP Pump Body
Ceramic spindle
Strontium ferrite magnet
Nitrile 'O' ring

other construction materials available to special order

Features

Magnetically coupled, sealless leak-free design
Pump body orientation easily altered to suit installations
Variable mounting foot positions
Discharge heads to 2 metres

Options

BM25/2
230V 1ph 50/60 Hz
230V 1ph 50/60 Hz

Port Details
Plain 22 mm
1/2" BSP M

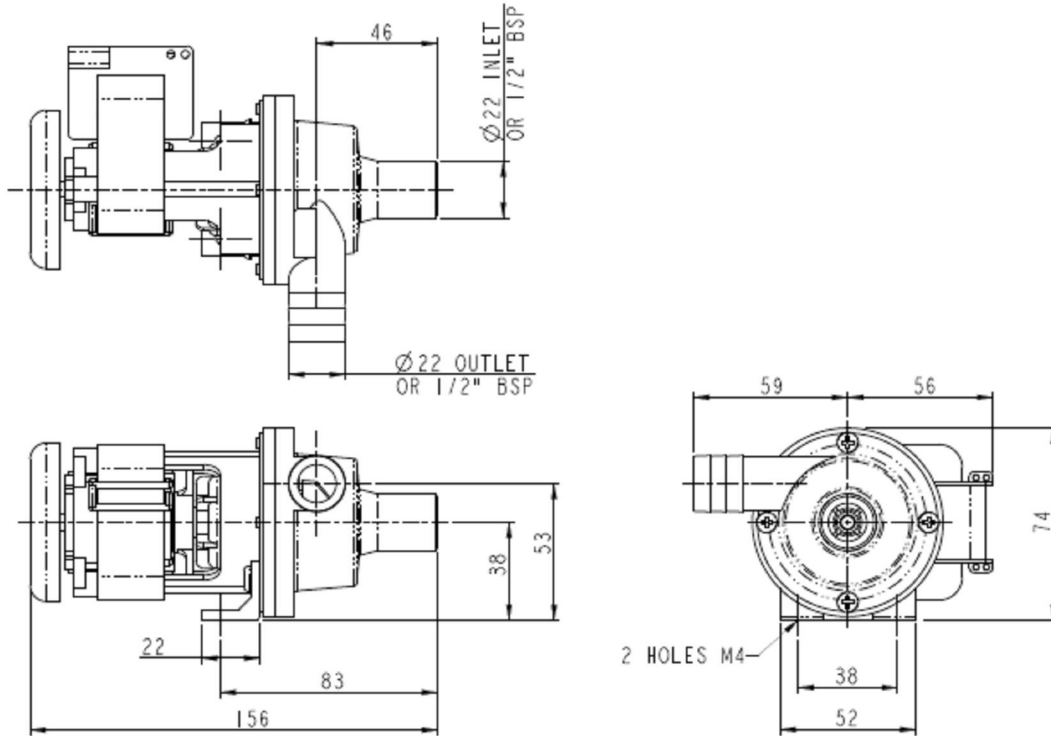
BM25/2
110V 1ph 50/60 Hz
110V 1ph 50/60 Hz

Port Details
Plain 22 mm
1/2" BSP M

Installation

Drawings not to scale
Dimensions in millimetres

BM25/2

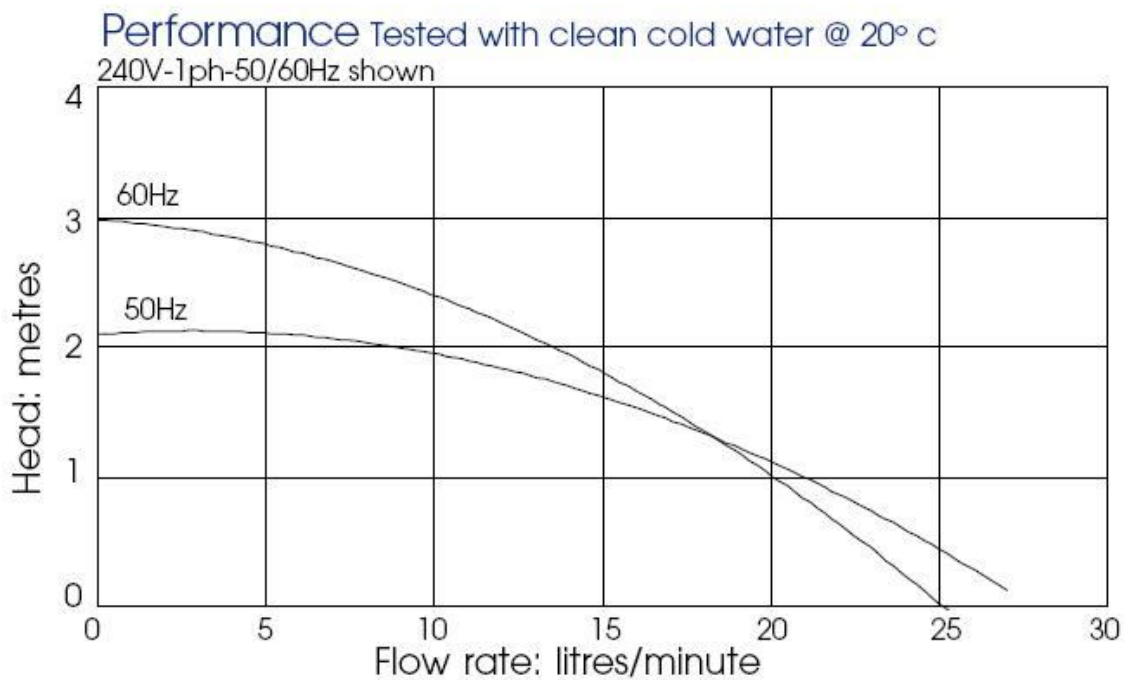


Specification

| Model | Overall height (mm) | Overall length (mm) | Overall width (mm) | Weight (kg) | Max body pressure (bar) | Run-out flow rate (l/min) | Closed valve head (m) | Temp range (degC) | *Max specific gravity | Motor output (watts) |
|--------|---------------------|---------------------|--------------------|-------------|-------------------------|---------------------------|-----------------------|-------------------|-----------------------|----------------------|
| BM25/2 | 74 | 156 | 115 | 1.2 | 1.4 | 50 Hz 27 | 2.15 | -20 to +85 | 1.2 | 10 |
| | | | | | | 60 Hz 25 | 3 | | | |

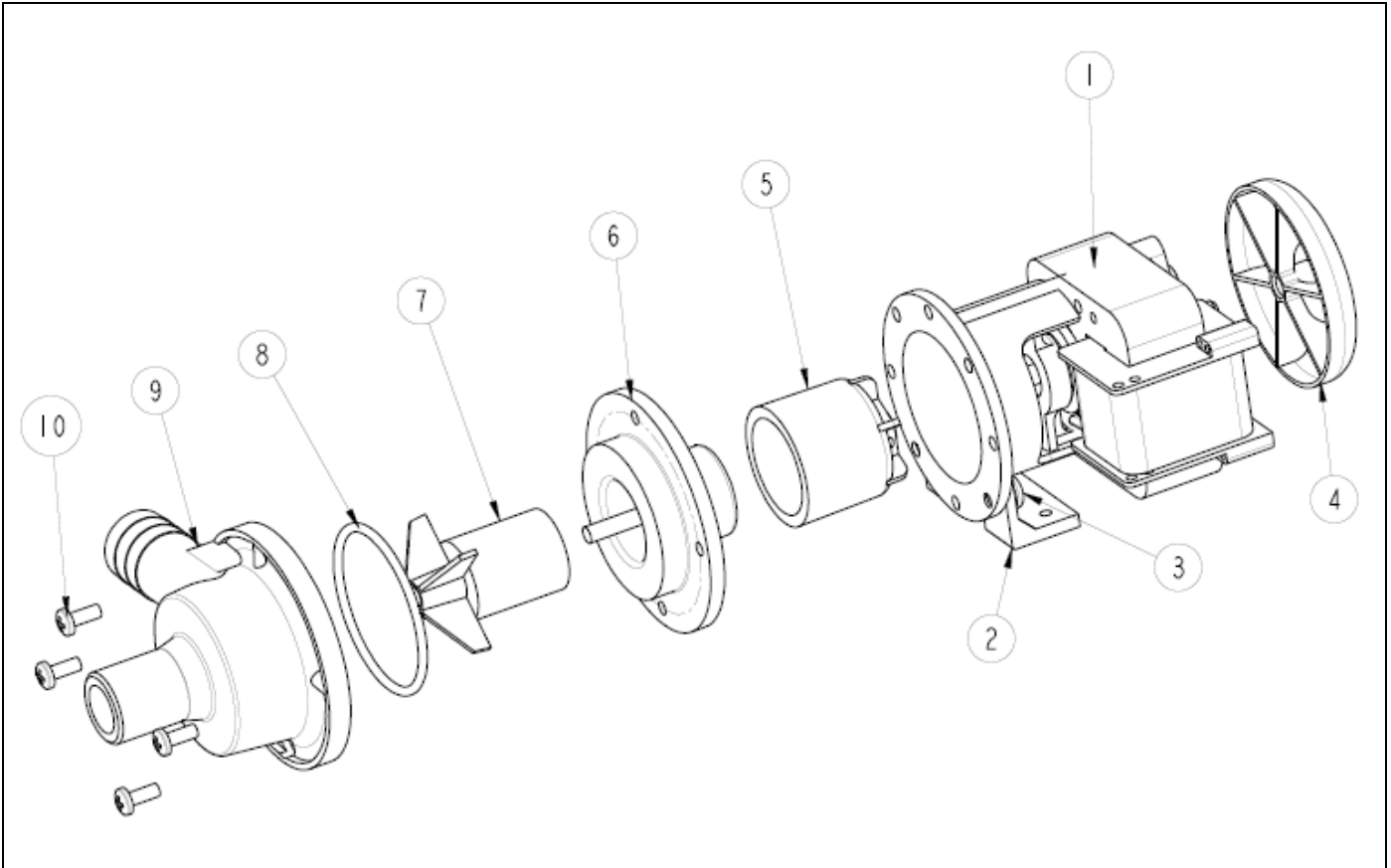
*Assuming maximum viscosity of 30cp. Refer to Totton Pumps for higher viscosities and specific gravities

Performance



BM pumps are not self-priming and are not designed to run dry.
The company reserves the right change specifications.

Part List



| Item Number | Description | Quantity | Part Number | | |
|-------------|------------------|----------|------------------|----------------------|-----------------------|
| 1 | Motor | 1 | - | | |
| 2 | Mounting Bracket | 1 | 043308 | | |
| 3 | Screw | 2 | 031427 | | |
| 4 | Fan | 1 | 033322 | | |
| 5 | Drive Magnet | 1 | 023267 | | |
| 6 | Spindle Housing | 1 | 003271 | | |
| 7 | Impeller | 1 | 003279 | | |
| 8 | O-ring | 1 | 003224 (Nitrile) | | |
| 9 | Pump Body | 1 | 013333 (plain) | 013334 (PP threaded) | 033225 (PPS threaded) |
| 10 | Screw | 4 | 022163 | | 022111 |

Totton Pumps Ltd.
 Tel: +44 (0) 23 8066 6685
 Fax: +44 (0) 23 8066 6880
 Email: info@totton-pumps.com
 Web: www.totton-pumps.co.uk