

Principle Applications

Water circulation, re-circulation & cooling duties in beverage, laboratory, agricultural, print, photographic & industrial processing applications

Wetted Materials

PP Pump Body
Ceramic spindle
Strontium ferrite magnet
Nitrile 'O' ring
other construction materials available to special order

Features

Magnetically coupled, sealless leak-free design
Pump body orientation easily altered to suit installations
Variable mounting foot positions
Discharge heads to 4 metres

Options

BM25/4
230V 1ph 50 Hz
230V 1ph 50 Hz

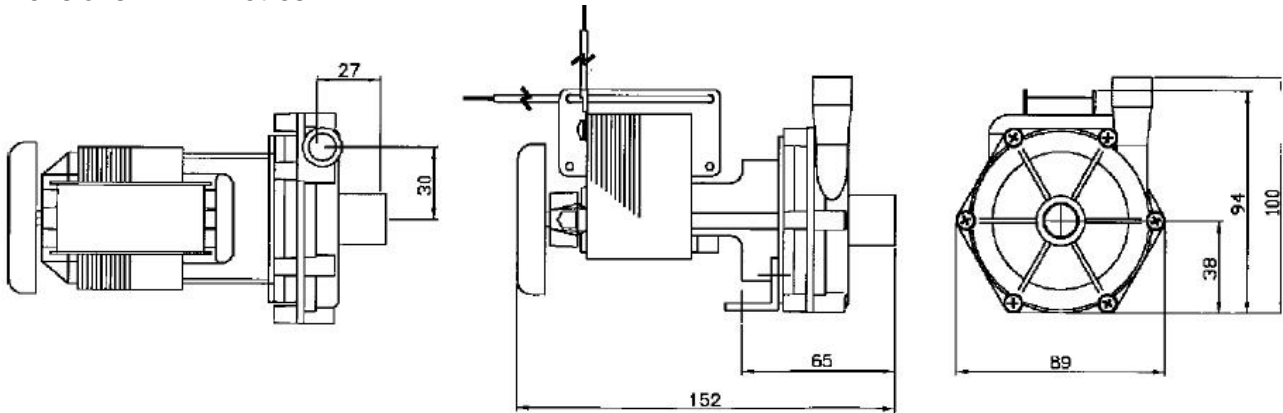
Port Details

Plain 21 mm inlet, 16.5 mm outlet
1/2" BSP M inlet, 3/8" BSP M outlet

Installation

Drawings not to scale
Dimensions in millimetres

BM25/4



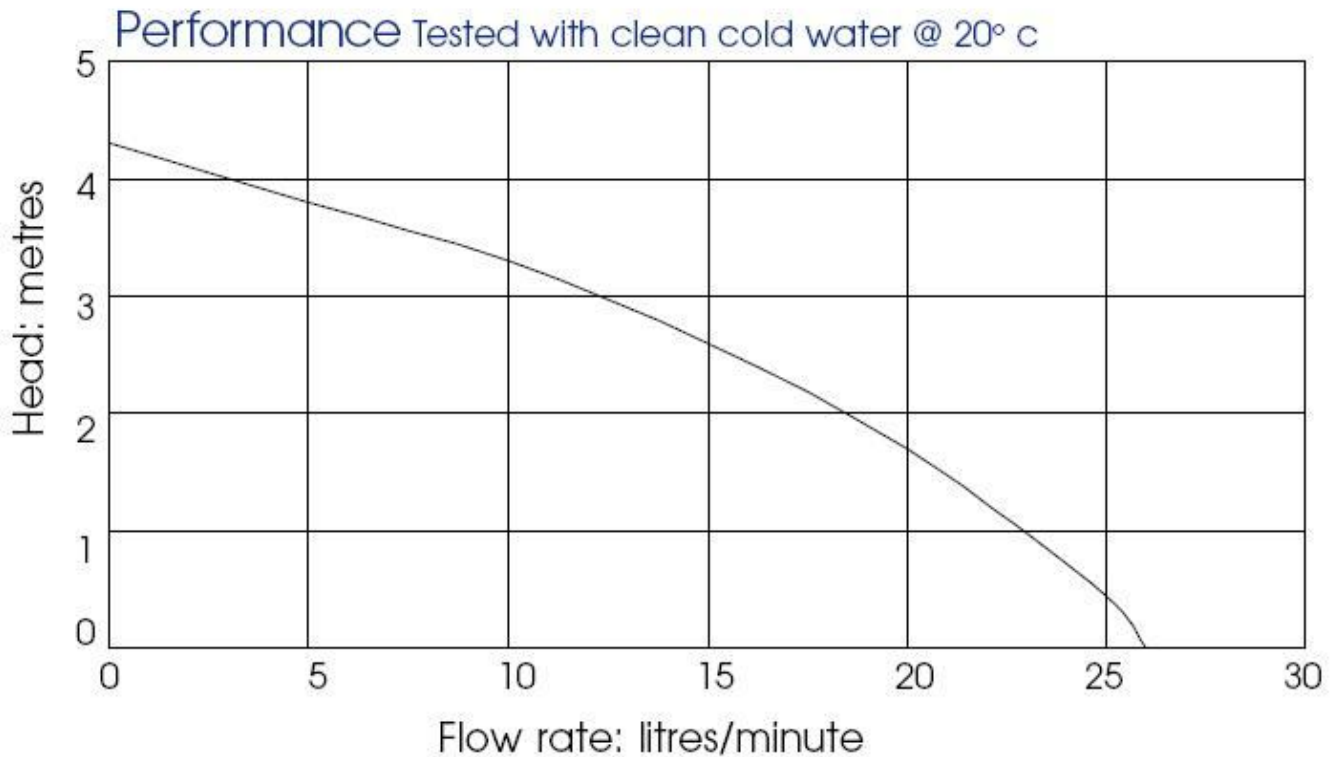
mounting foot fixing holes:M5

Specification

Model	Overall height (mm)	Overall length (mm)	Overall width (mm)	Weight (kg)	Max body pressure (bar)	Run-out flow rate (l/min)	Closed valve head (m)	Temp range (degC)	*Max specific gravity	Motor output (watts)
BM25/4	100	152	89	1.6	1.4	25	4	-20 to +85	1.2	18

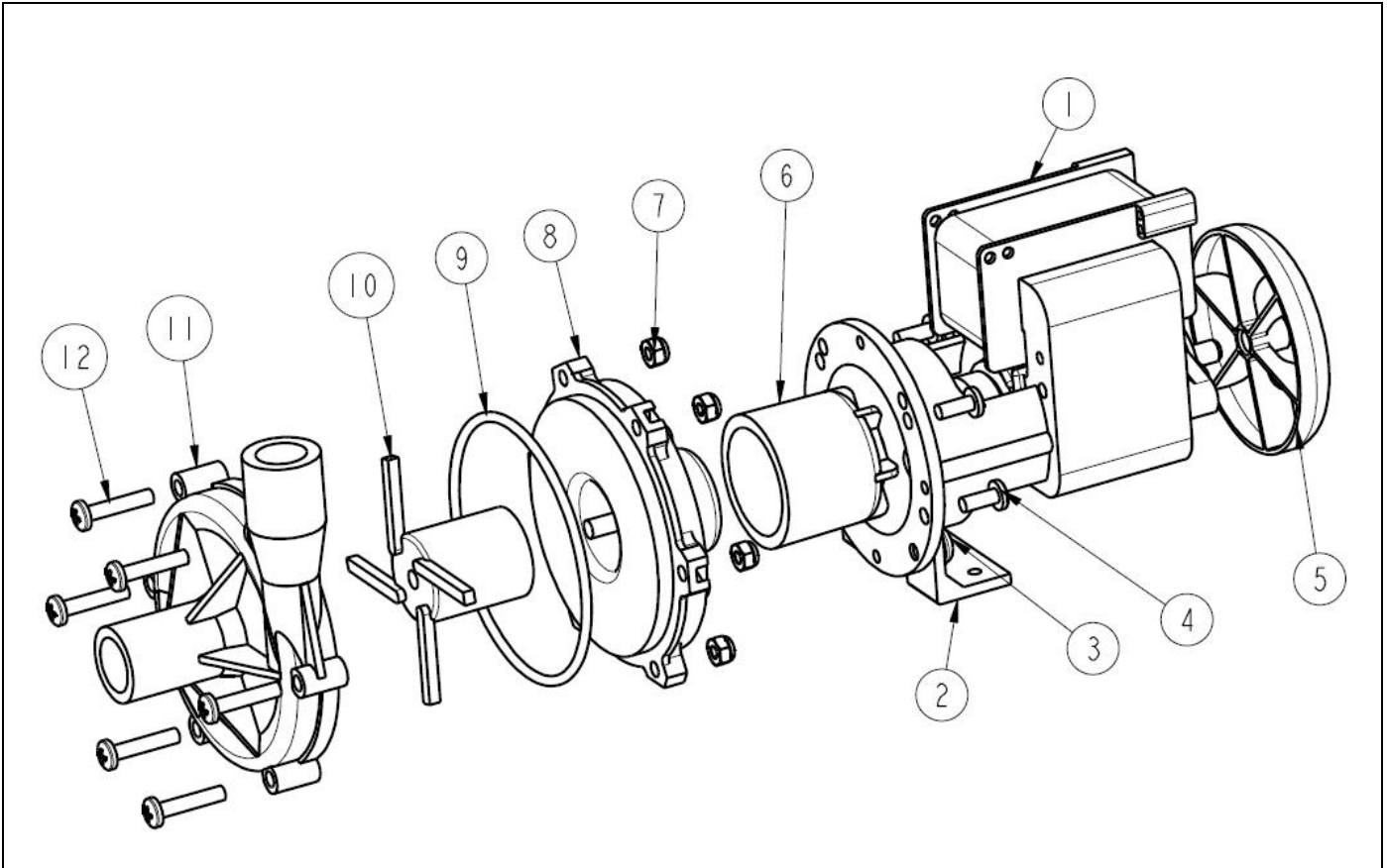
*Assuming maximum viscosity of 30cp. Refer to Totton Pumps for higher viscosities and specific gravities

Performance



BM pumps are not self-priming and are not designed to run dry.
The company reserves the right change specifications.

Part List



Item Number	Description	Quantity	Part Number	
1	Motor	1	-	
2	Mounting Bracket	1	043308	
3	Screw	2	031427	
4	Screw	4	022163	
5	Fan	1	033322	
6	Drive Magnet	1	023267	
7	Nut	6	001564	
8	Spindle Housing	1	003277	
9	O-ring	1	003398 (Nitrile)	
10	Impeller	1	003397	
11	Pump Body	1	013385 (plain)	013369 (threaded)
12	Screw	6	001626	

Totton Pumps Ltd.

Tel: +44 (0) 23 8066 6685

Fax: +44 (0) 23 8066 6880

Email: info@totton-pumps.com

Web: www.totton-pumps.co.uk