

### Principle Applications

Water circulation, re-circulation & cooling duties in beverage, laboratory, agricultural, print, photographic & industrial processing applications

### Wetted Materials

PP Pump Body  
Ceramic spindle  
Strontium ferrite magnet  
Nitrile 'O' ring

other construction materials available to special order

### Features

Magnetically coupled, sealless leak-free design  
Pump body orientation easily altered to suit installations  
Variable mounting foot positions  
Discharge heads to 3 metres

### Options

#### BM35/3

230V 1ph 50/60 Hz  
230V 1ph 50/60 Hz

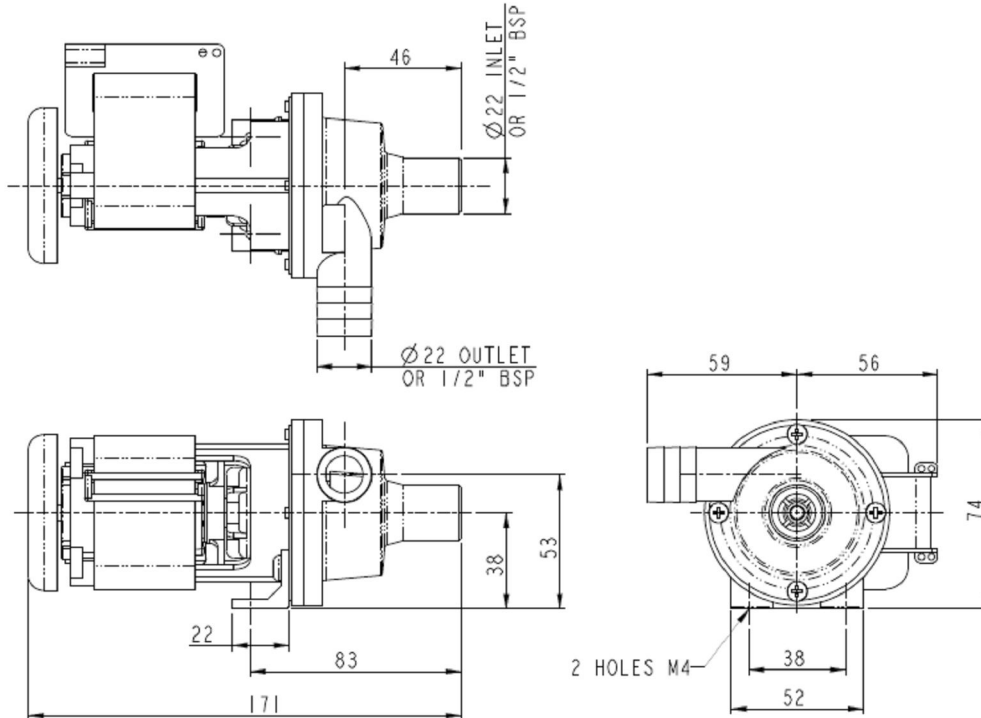
#### Port Details

Plain 21 mm inlet, 16.5 mm outlet  
1/2" BSP M inlet, 3/8" BSP M outlet

## Installation

Drawings not to scale  
Dimensions in millimetres

**BM35/3**



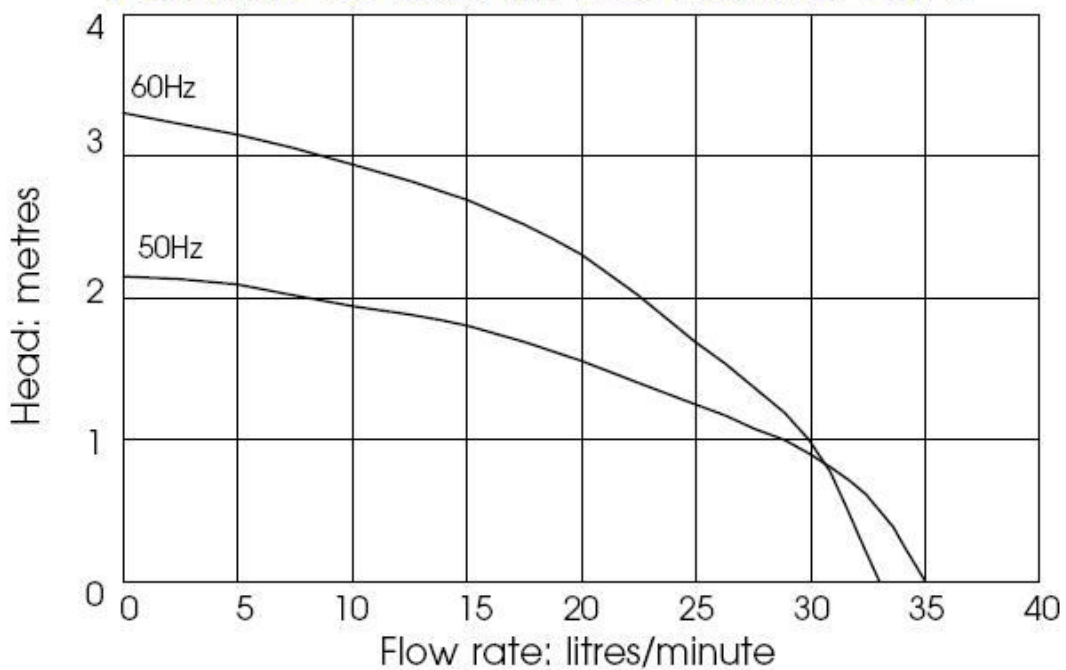
## Specification

Model	Overall height (mm)	Overall length (mm)	Overall width (mm)	Weight (kg)	Max body pressure (bar)	Run-out flow rate (l/min)	Closed valve head (m)	Temp range (degC)	*Max specific gravity	Motor output (watts)
BM35/3	74	171	115	1.9	1.4	50 Hz 35	2.1	-20 to +85	1.2	18
						60 Hz 33	3.3			

\*Assuming maximum viscosity of 30cp. Refer to Totton Pumps for higher viscosities and specific gravities

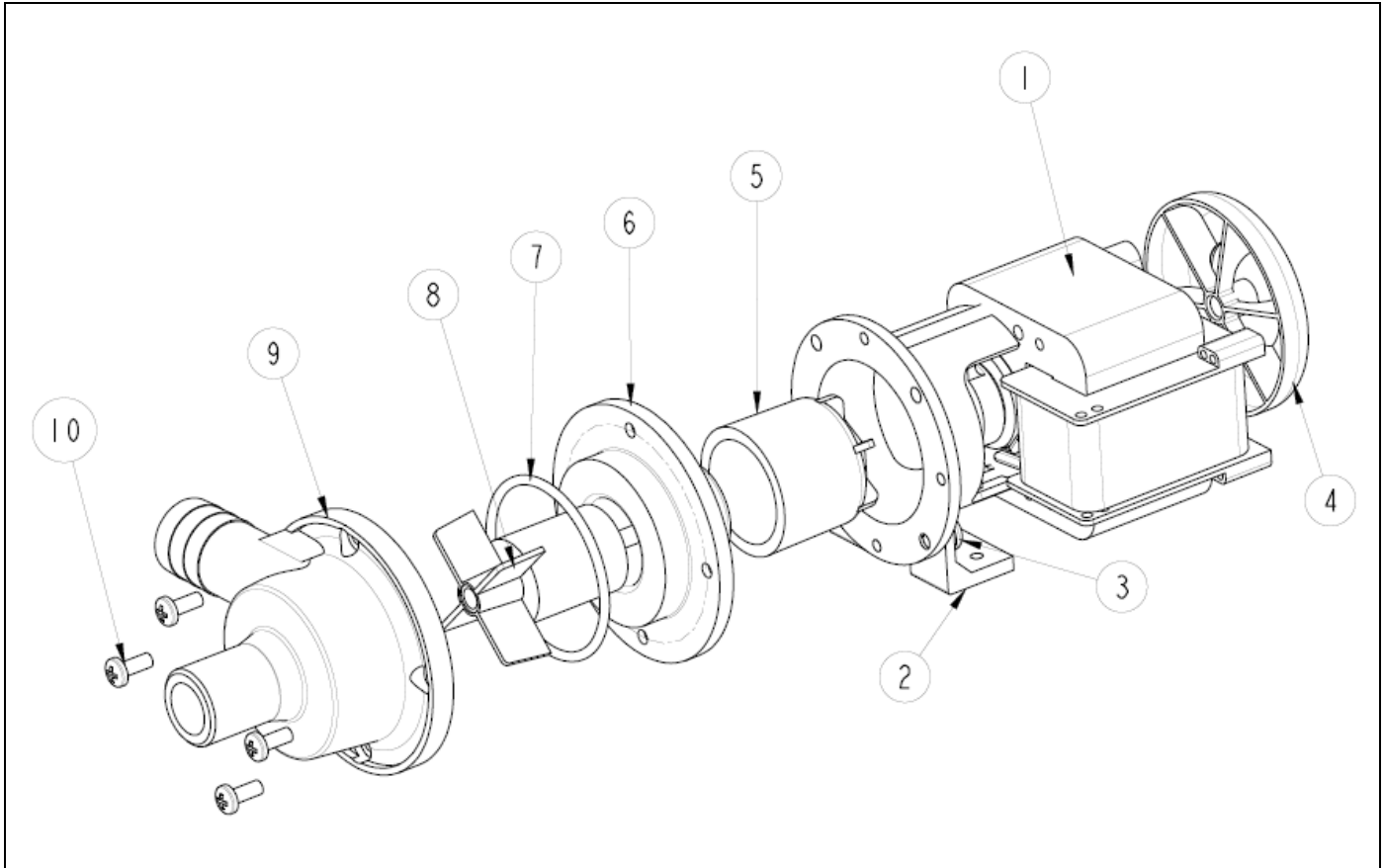
## Performance

Performance Tested with clean cold water @ 20° c



BM pumps are not self-priming and are not designed to run dry.  
The company reserves the right change specifications.

Part List



Item Number	Description	Quantity	Part Number		
1	Motor	1	-		
2	Mounting Bracket	1	043308		
3	Screw	2	031427		
4	Fan	1	033322		
5	Drive Magnet	1	023267		
6	Spindle Housing	1	003271		
7	O-ring	1	003224 (Nitrile)		
8	Impeller	1	003282 (50 Hz)	003279 (60 Hz)	
9	Pump Body	1	013333 (plain)	013334 (PP threaded)	033225 (PPS threaded)
10	Screw	4	022163		022111

**Totton Pumps Ltd.**  
 Tel: +44 (0) 23 8066 6685  
 Fax: +44 (0) 23 8066 6880  
 Email: [info@totton-pumps.com](mailto:info@totton-pumps.com)  
 Web: [www.totton-pumps.co.uk](http://www.totton-pumps.co.uk)