

### Principal Applications

Specifically developed for applications requiring cost effective high head, continuous low flow for the transfer and recirculation of water and glycol solutions.

### Wetted Materials

Brass spindle  
Nitrile 'O' ring  
PP/PPS pump housing  
Alumina ceramic graflon loaded PTFE thrust washer

### Features

Magnetic couplings provide an energy efficient thermal shield, minimising heat transfer to the pumped fluids  
Variable pump body orientation  
Adaptable mounting foot positions  
Compatible with standard fittings  
IPX5 motor enclosure  
Deep groove ball bearings

**GP20/1218**  
230V 1Ph 50Hz  
230V 1Ph 50Hz

**Port Details**  
Plain 15 mm  
3/8"bsp Male

**GP20/18**  
110V 1Ph 50Hz  
110V 1Ph 50Hz

**Port Details**  
Plain 15 mm  
3/8"bsp Male



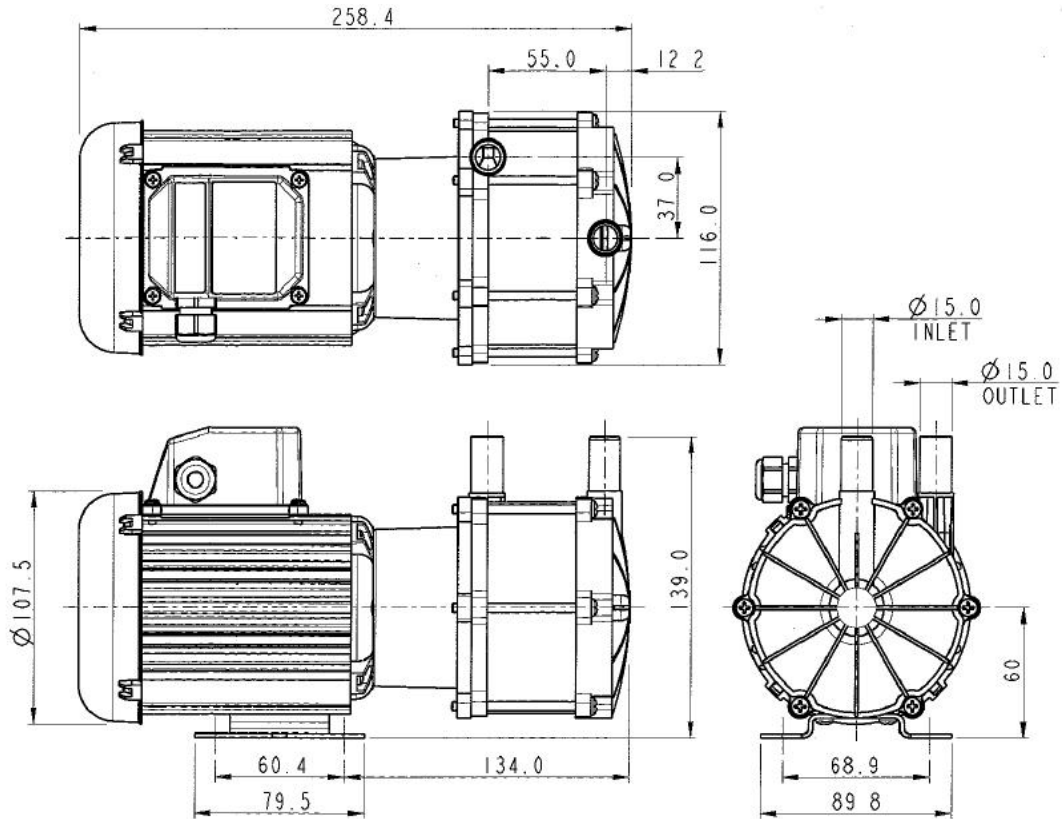
*Engineered for life*



## Installation

Drawings not to scale  
Dimensions in millimetres

**GP20/18**

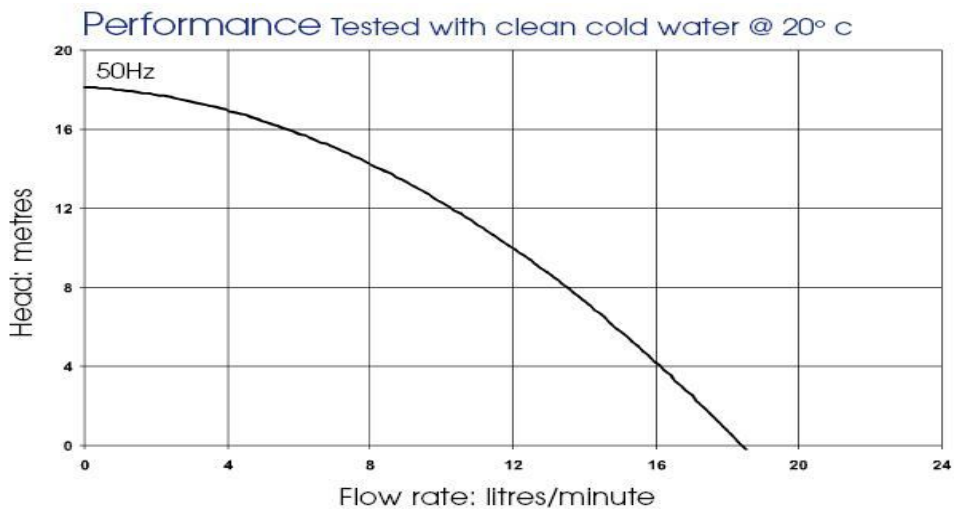


## Specification

Model	Overall height (mm)	Overall length (mm)	Overall width (mm)	Weight (kg)	Max body pressure (bar)	Run-out flow rate (l/min)	Closed valve head (m)	Temp range (degC)	*Max specific gravity	Motor output (watts)
GP20/18	143	259	116	3.8	2.5	18.5	18	-20 to +85	1.2	90

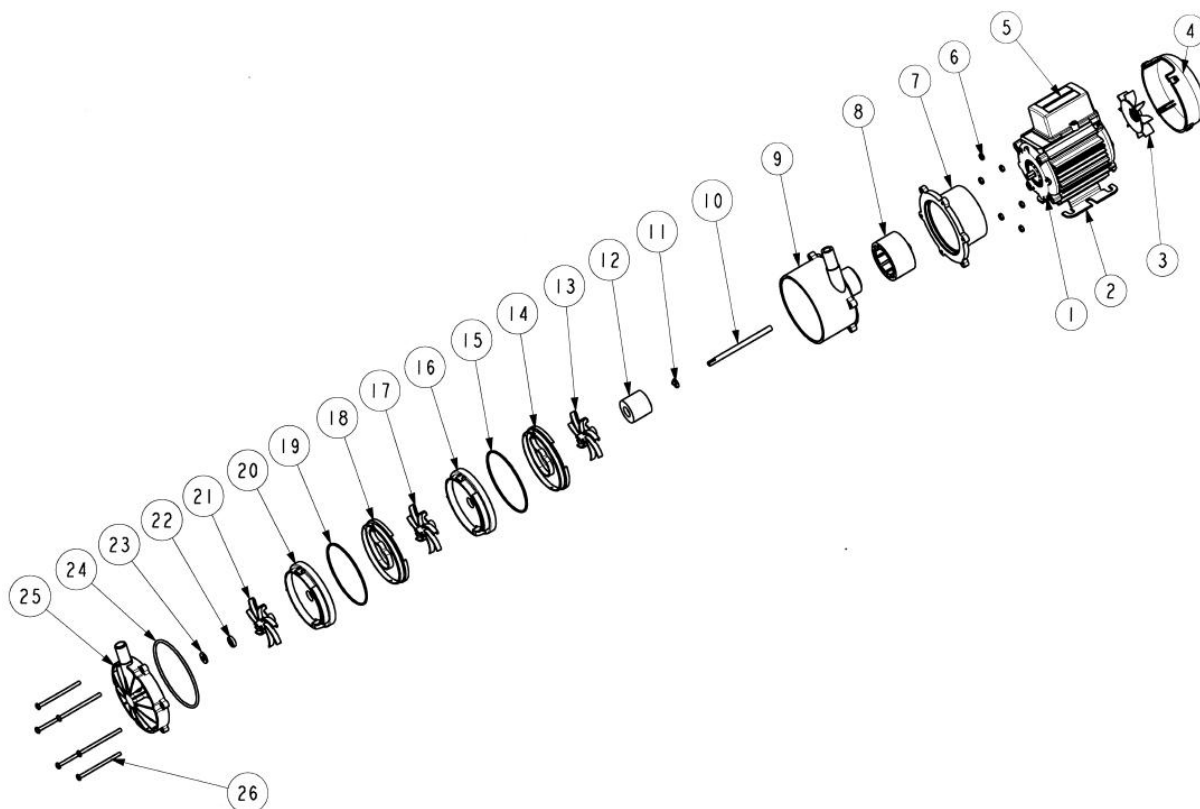
\*Assuming maximum viscosity of 30cp. Refer to Totton Pumps for higher viscosities and specific gravities

## Performance



NOTE: These magnetically coupled pumps are designed for use with clean fluids. Solids will cause jamming. Abrasives will reduce pump life & invalidate the warranty. GP pumps are not self priming & are not designed to run dry  
The company reserves the right to change specifications

## Part List



Item Number	Description	Quantity	Part Number	
1	Motor	1	116843 (230 V)	116876 (110V)
2	Mounting Foot	1	036330	
3	Fan	1	001577	
4	Fan Cowl	1	036085	
5	Terminal Box	1	036078	
6	Nut	6	032105	
7	Adaptor	1	026217	
8	Drive Magnet	1	006287	
9	Pump Body	1	016375 (50Hz threaded ports)	016374 (60Hz threaded ports)
			016373 (50Hz plain ports)	016371 (60Hz plain ports)
10	Spindle	1	026207 (50Hz)	026206 (60Hz)
11	Thrust Washer	1	026208	
12	Driven Magnet	1	033293	
13	Impeller	1	026238	
14	Inter-Stage	1	026224	
15	O ring	1	022054	
16	Stage Element	1	026223	
17	Impeller	1	026238	
18	Inter-Stage	1	026224 (50Hz only)	
19	O ring	1	022054 (50Hz only)	
20	Stage Element	1	026223 (50Hz only)	
21	Impeller	1	026238 (50Hz only)	
22	Thrust Washer	1	026249	
23	Ceramic Washer	1	026252	
24	O Ring	1	022057	
25	Front Cover	1	026235 (threaded ports)	026225 (plain ports)
26	Screw	6	022061	

**Totton Pumps Ltd.**

Tel: +44 (0)23 8066 6685

Fax: +44 (0)23 8066 6880

Email: [info@totton-pumps.com](mailto:info@totton-pumps.com) – Web: [totton-pumps.co.uk](http://totton-pumps.co.uk)