

Principal Applications

Specifically developed for applications requiring cost effective, continuous low flow for the transfer and recirculation of water and glycol solutions.

Wetted Materials

Brass spindle
 Nitrile 'O' ring standard, other materials available
 StFe ceramic magnet
 PP pump housing – PPS optional
 PPS spindle housing
 Alumina ceramic thrust washer

Features

Magnetic couplings provide an energy efficient thermal shield, minimising heat transfer to the pumped fluids
 Variable pump body orientation
 Adaptable mounting foot positions
 Compatible with standard fittings
 IPX5 motor enclosure
 Deep groove ball bearings

GP40/4

230V 1Ph 50Hz
 230V 1Ph 50Hz
 230V 1Ph 60Hz
 230V 1Ph 60Hz

Port Details

21 mm hose barb
 1/2"bsp Male
 21 mm hose barb
 1/2"bsp Male

GP40/4

110V 1Ph 50Hz
 110V 1Ph 50Hz
 110V 1Ph 60Hz
 110V 1Ph 60Hz

Port Details

21 mm hose barb
 1/2"bsp Male
 21 mm hose barb
 1/2"bsp Male



ITT

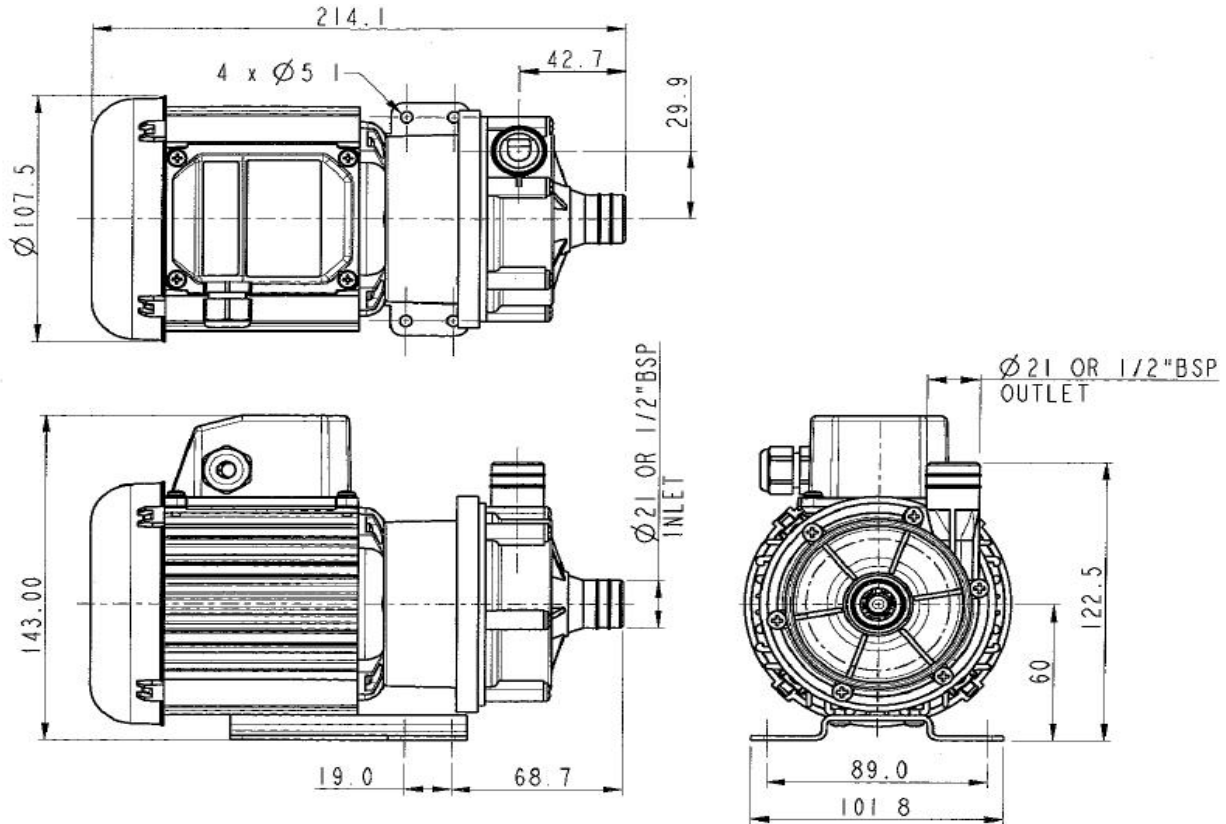
Engineered for life



Installation

Drawings not to scale
Dimensions in millimetres

GP40/4

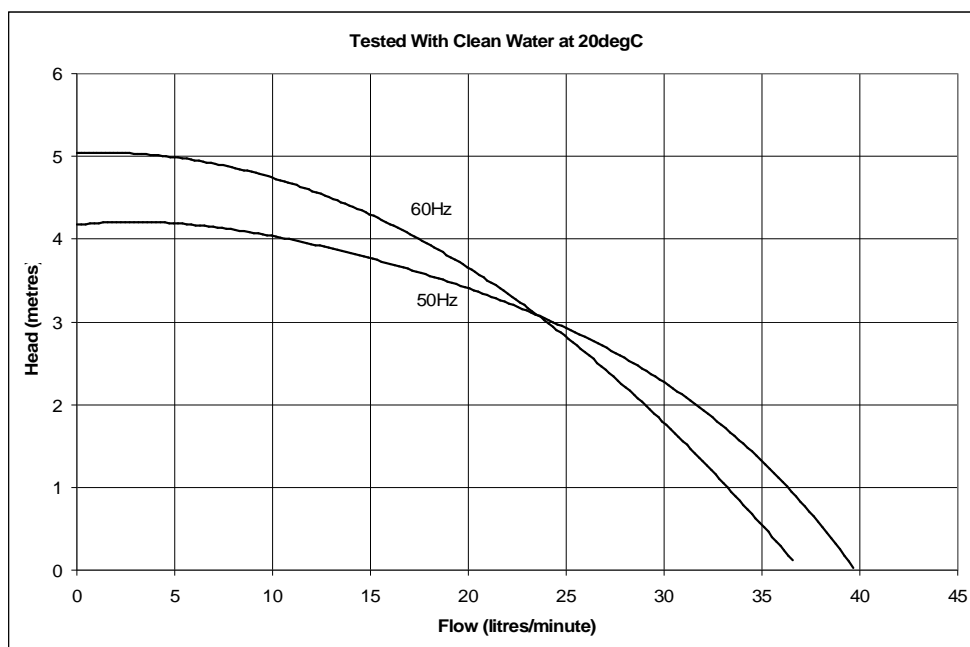


Specification

Model	Overall height (mm)	Overall length (mm)	Overall width (mm)	Weight (kg)	Max body pressure (bar)	Run-out flow rate (l/min)	Closed valve head (m)	Temp range (degC)	*Max specific gravity	Motor output (watts)
GP40/4	143	214	102	2.6	1.4	50 Hz 40	50 Hz 4.2	-20 to +85	1.2	30
						60 Hz 37	60 Hz 5.1			

*Assuming maximum viscosity of 30cp. Refer to Totton Pumps for higher viscosities and specific gravities

Performance

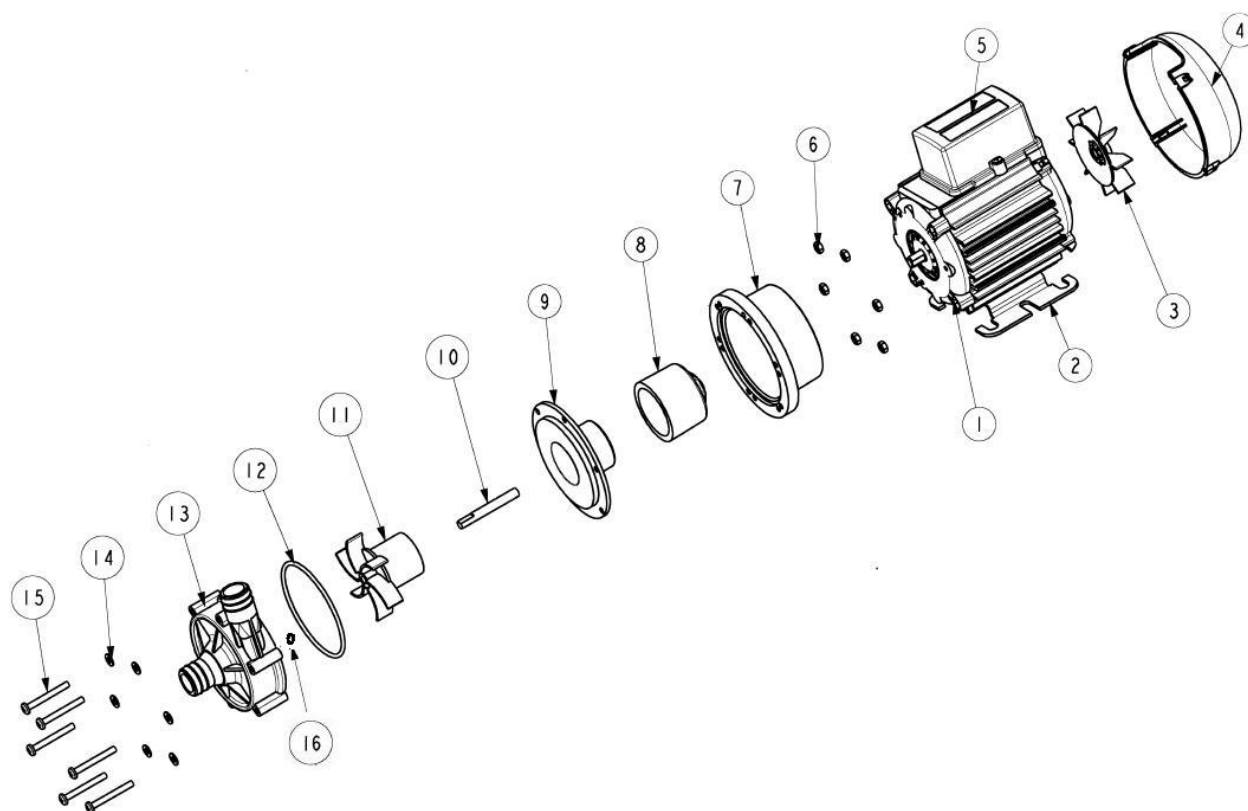


NOTE: These magnetically coupled pumps are designed for use with clean fluids. Solids will cause jamming. Abrasives will reduce pump life & invalidate the warranty.

GP pumps are not self priming & are not designed to run dry

The company reserves the right to change specifications

Part List



Item Number	Description	Quantity	Part Number	
1	Motor	1	116849 (230 V)	116874 (110V)
2	Mounting Foot	1	036329	
3	Fan	1	001577	
4	Fan Cowl	1	036085	
5	Terminal Box	1	036078	
6	Nut	6	032105	
7	Adaptor	1	036324	
8	Drive Magnet	1	006287	
9	Spindle Housing	1	016311	
10	Spindle	1	016301	
11	Impeller	1	016269 (50 Hz)	026216 (60 Hz)
12	O ring	1	003398	
13	Pump Body	1	016358 (plain ports PP)	016360 (threaded ports PP)
14	Nut	6	032105	
15	Screw	6	022115	
16	D Washer	1	016225	

Totton Pumps Ltd.

Tel: +44 (0)23 8066 6685

Fax: +44 (0)23 8066 6880

Email: info@totton-pumps.comWeb: totton-pumps.co.uk