

Principal Applications

Specifically developed for applications requiring cost effective, continuous low flow for the transfer and recirculation of water and glycol solutions.

Wetted Materials

- Brass spindle
- Nitrile 'O' ring standard, other materials available
- StFe ceramic magnet
- PP pump housing – PPS optional
- PPS spindle housing
- Alumina ceramic thrust washer

Features

- Magnetic couplings provide an energy efficient thermal shield, minimising heat transfer to the pumped fluids
- Variable pump body orientation
- Adaptable mounting foot positions
- Compatible with standard fittings
- IPX5 motor enclosure
- Deep groove ball bearings

GP80/6

230V 1Ph 50Hz
230V 1Ph 50Hz
230V 1Ph 60Hz
230V 1Ph 60Hz

Port Details

26 mm hose barb
3/4"bsp Male
26 mm hose barb
3/4"bsp Male

GP80/6

110V 1Ph 50Hz
110V 1Ph 50Hz
110V 1Ph 60Hz
110V 1Ph 60Hz

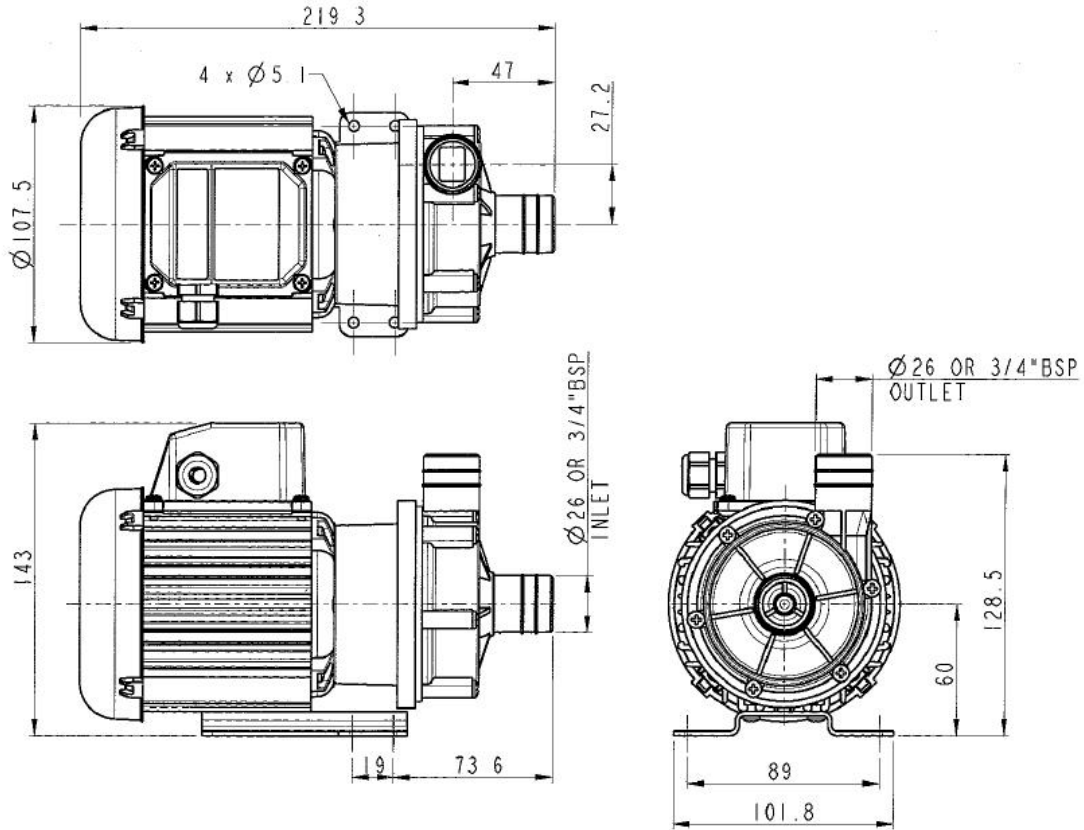
Port Details

26 mm hose barb
3/4"bsp Male
26 mm hose barb
3/4"bsp Male

Installation

Drawings not to scale
Dimensions in millimetres

GP80/6

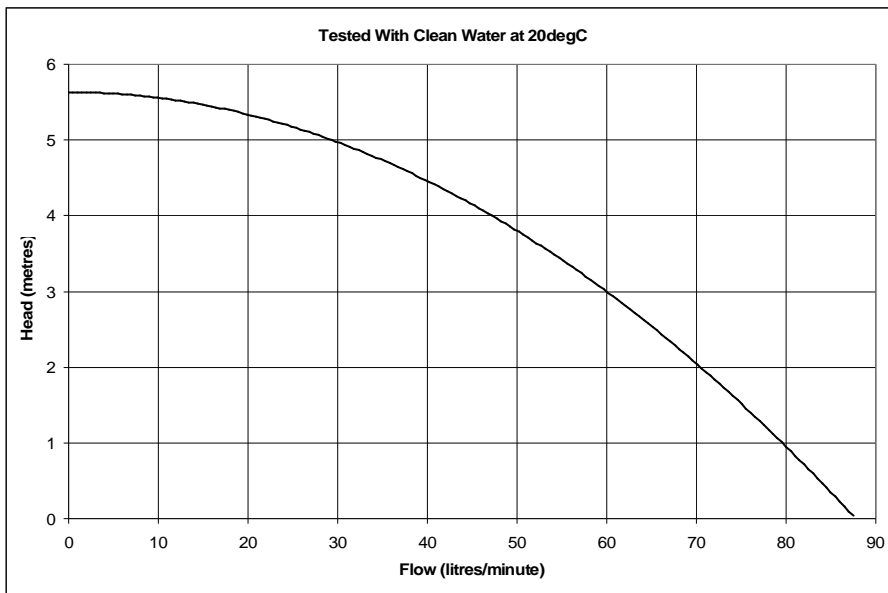


Specification

Model	Overall height (mm)	Overall length (mm)	Overall width (mm)	Weight (kg)	Max body pressure (bar)	Run-out flow rate (l/min)	Closed valve head (m)	Temp range (degC)	*Max specific gravity	Motor output (watts)
GP80/6	143	219	102	3.2	1.4	87	5.7	-20 to +85	1.2	60

*Assuming maximum viscosity of 30cp. Refer to Totton Pumps for higher viscosities and specific gravities

Performance

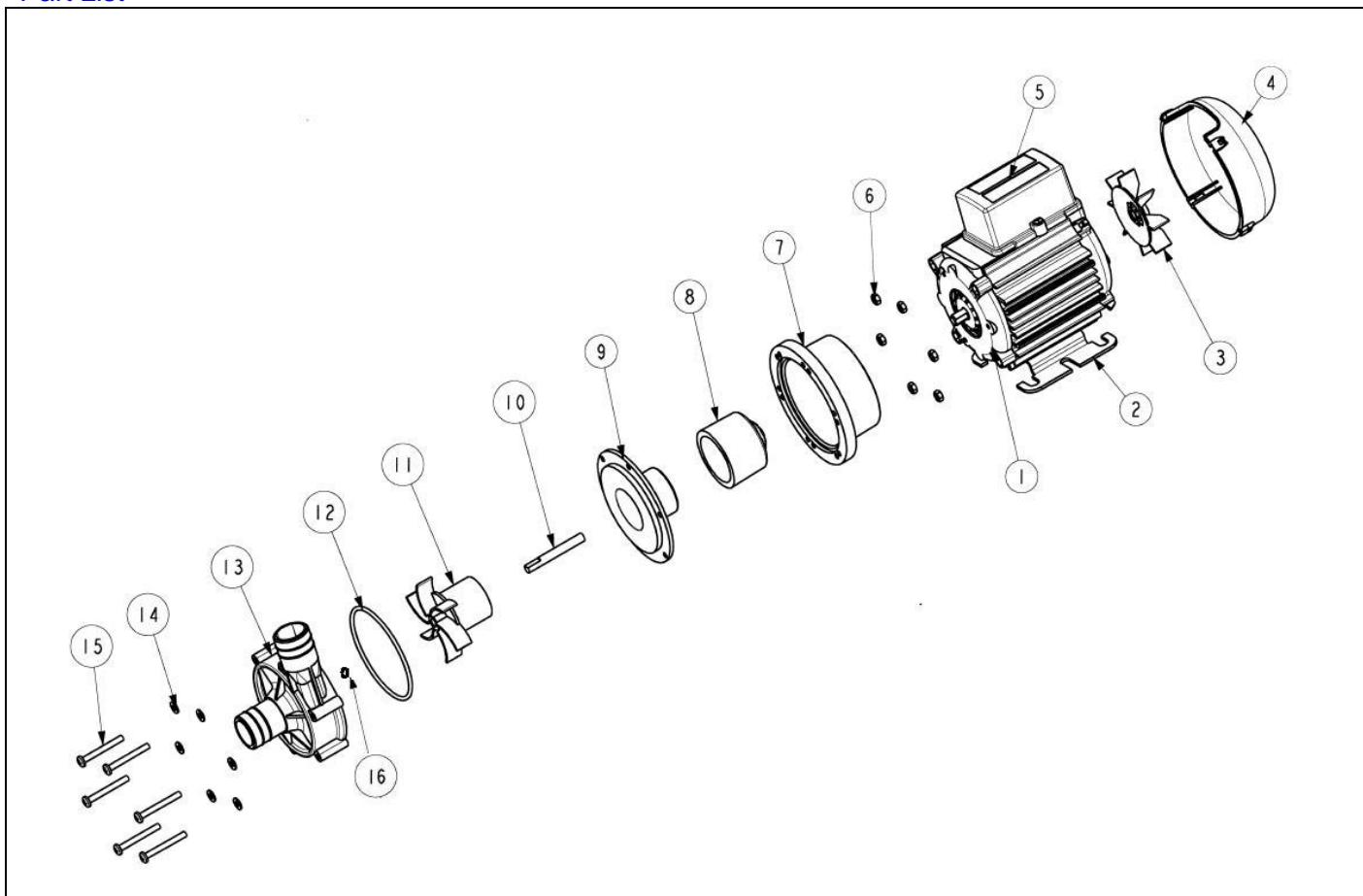


NOTE: These magnetically coupled pumps are designed for use with clean fluids. Solids will cause jamming. Abrasives will reduce pump life & invalidate the warranty.

GP pumps are not self priming & are not designed to run dry

The company reserves the right to change specifications

Part List



Item Number	Description	Quantity	Part Number	
1	Motor	1	116842 (230 V)	116875 (110V)
2	Mounting Foot	1	036329	
3	Fan	1	001577	
4	Fan Cowl	1	036085	
5	Terminal Box	1	036078	
6	Nut	6	032105	
7	Adaptor	1	036324	
8	Drive Magnet	1	016541	
9	Spindle Housing	1	016311	
10	Spindle	1	016301	
11	Impeller	1	016267 (50 Hz)	016282 (60 Hz)
12	O ring	1	003398	
13	Pump Body	1	016359 (plain ports PP)	016361 (threaded ports PP)
14	Nut	6	032105	
15	Screw	6	022115	
16	D Washer	1	016225	

Totton Pumps Ltd.

Tel: +44 (0)23 8066 6685

Fax: +44 (0)23 8066 6880

Email: info@totton-pumps.comWeb: totton-pumps.co.uk