

Principal Applications

Designed for continuous recirculation of carbonated water, aggressive chemicals, chilled water, pure or precious liquids in high pressure systems

Wetted Materials

PPS Pump Body
PPS Spindle Housing
LCP Impeller
EPDM O rings

Features

Manufactured in chemically resistant thermo-plastics
Operating at an optimum flow rate of 5 litres/minute
Magnetic coupling provides an energy efficient thermal shield,
minimising heat transfer to pumped fluid
Temperature stability and product purity ensured
Leak-free continuous operation
IPX5 motor enclosure
Low condensation
Zero maintenance
Long life

HPR10/15

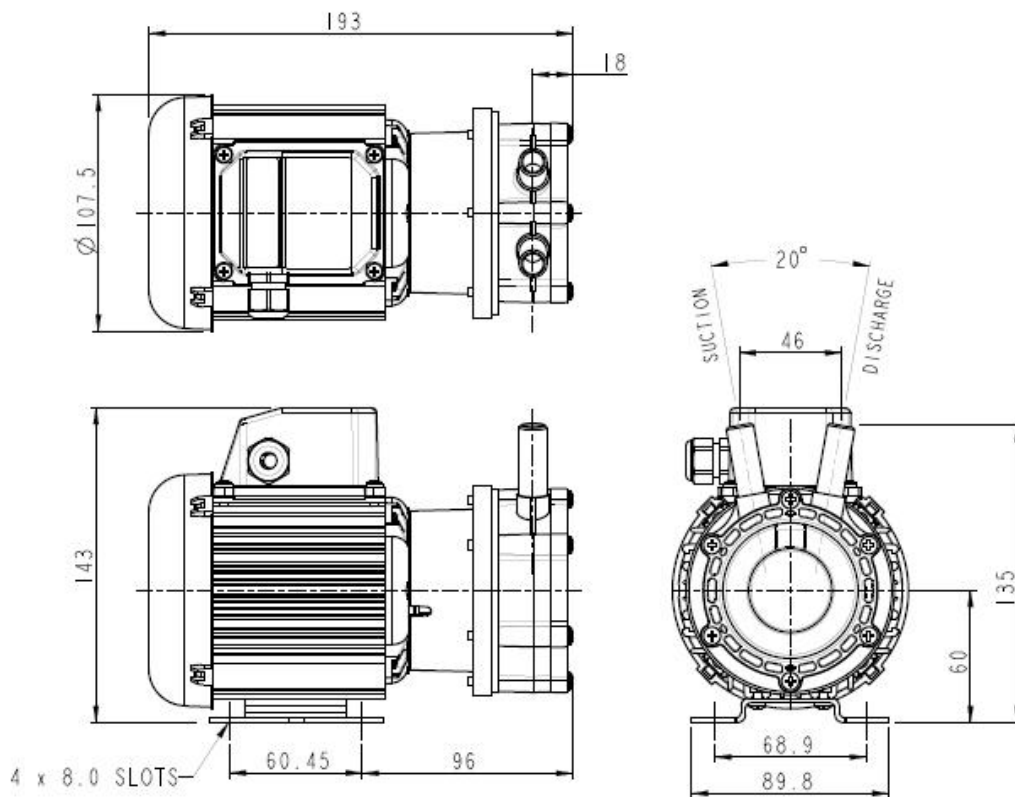
230V 1Ph 50/60Hz
110V 1Ph 50/60Hz

Port Details

1/2" standard, 15mm optional
1/2" standard, 15mm optional

Drawings not to scale
 Dimensions in millimetres

GPR10/15

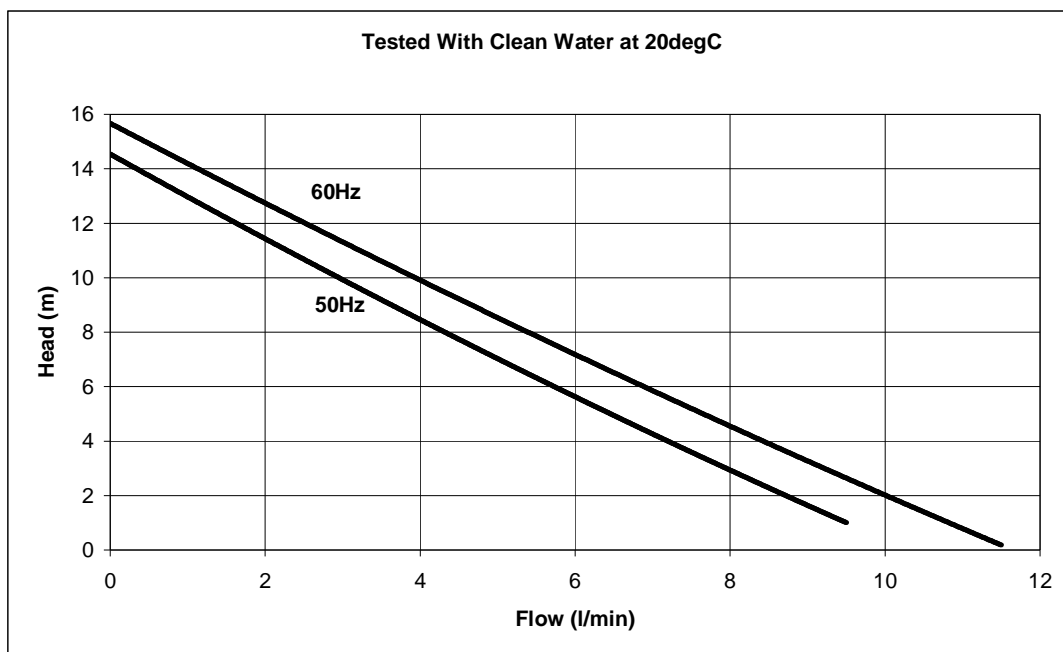


Specification

Model	Overall height (mm)	Overall length (mm)	Overall width (mm)	Weight (kg)	Max body pressure (bar)	Run-out flow rate (l/min)	Closed valve head (m)	Temp range (degC)	*Max specific gravity	Motor output (watts)
GPR10/15	143	193	90	3.1	6	50 Hz 10.1	50 Hz 14.6	-20 to +85	1.0	60
						60 Hz 11.5	60 Hz 15.8			

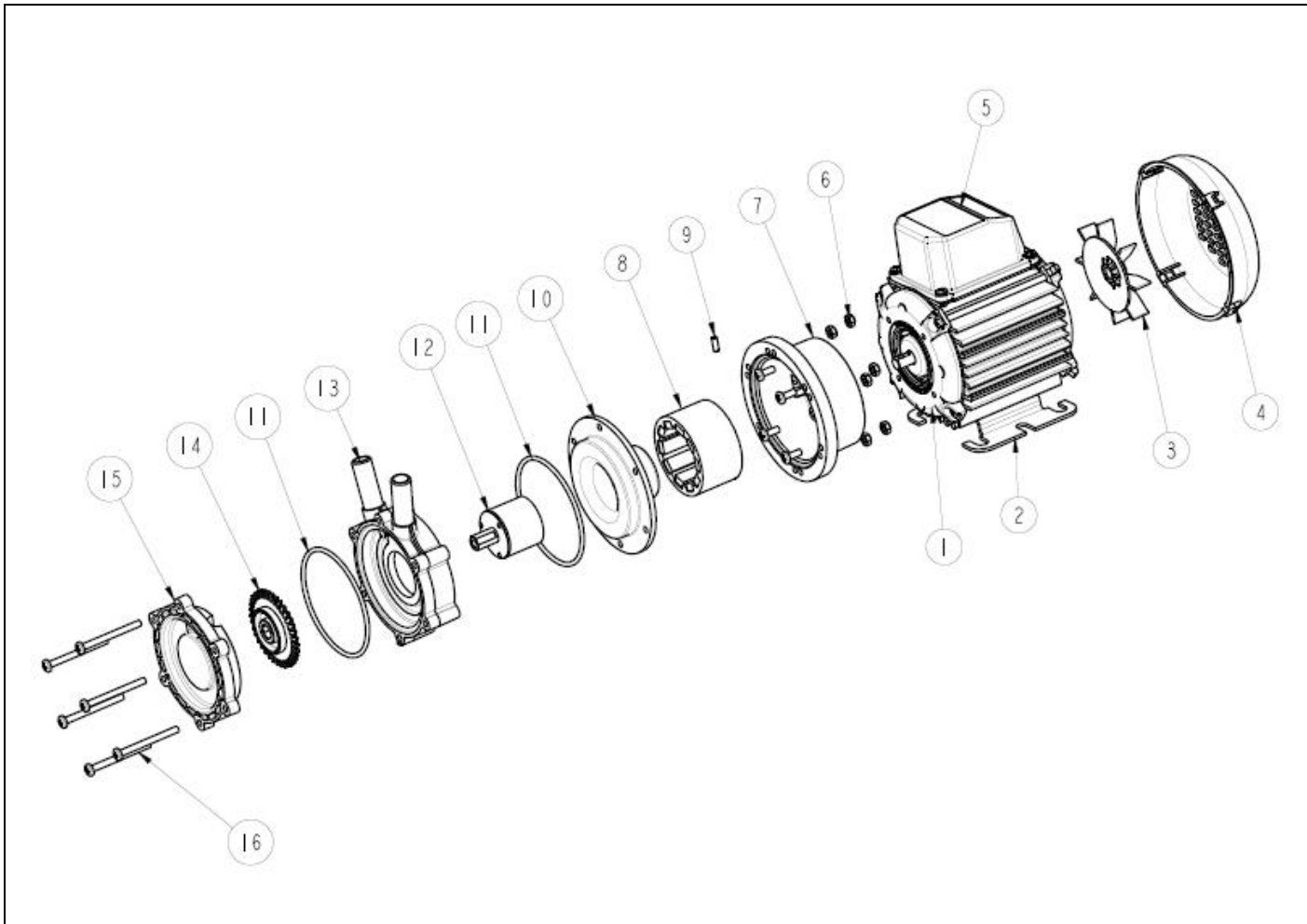
*Assuming maximum viscosity of 30cp. Refer to Totton Pumps for higher viscosities and specific gravities

Performance



NOTE: These magnetically coupled pumps are designed for use with clean fluids. Solids will cause jamming. Abrasives will reduce pump life & invalidate the warranty.
 HPR pumps are not self-priming & are not designed to run dry
 The company reserves the right to change specifications

Part List



Item Number	Description	Quantity	Part Number	
1	Motor	1	116842 (230V)	116875 (110V)
2	Mounting Foot	1	036330	
3	Fan	1	046033	
4	Fan Cowl	1	036085	
5	Terminal Box	1	036078	
6	Nut	6	032105	
7	Adaptor	1	036324	
8	Drive Magnet	1	006287	
9	Grub Screw	1	001406	
10	Spindle Housing	1	036389	
11	O Ring	2	022845	
12	Driven Magnet	1	033291	
13	Pump Body	1	043312 ½" ports	043313 15mm ports
14	Impeller	1	033286	
15	Front Plate	1	033285	
16	Screw	6	022060	

Totton Pumps Ltd.
 Tel: +44 (0)23 8066 6685
 Fax: +44 (0)23 8066 6880
 Email: info@totton-pumps.com
 Web: totton-pumps.co.uk