

Principle Applications

Designed for continuous recirculation of carbonated water, aggressive chemicals, chilled water, pure or precious liquids in high pressure systems.

Features

- Manufactured from chemically resistant thermoplastics
- Operating at an optimum flow rate of 3 litres/minute
- Wetted parts made from WRAS approved materials
- Magnetic coupling provides an energy efficient thermal shield, Minimising heat transfer to the pumped fluid.
- Temperature stability and product purity ensured
- Leak free continuous operation
- Low condensation
- Nitrile o rings standard. Other materials available
- Zero maintenance
- PPS pump head
- Long life

Options

Voltage Options

230V 1Ph 50/60Hz
110V 1Ph 50/60Hz

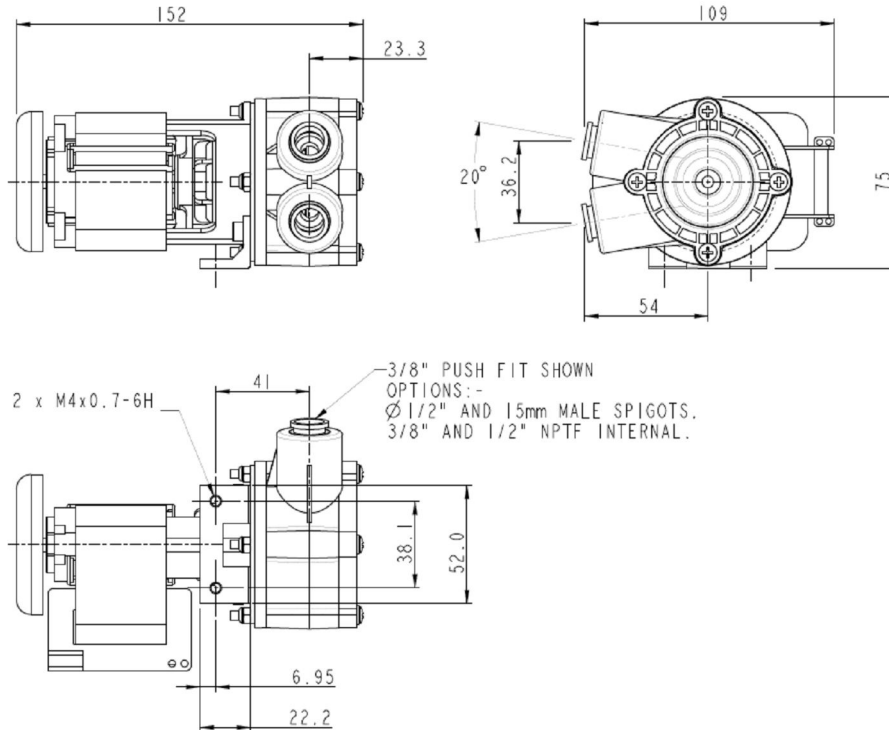
Port Options

½" OD
15mm OD
3/8" ID

Installation

Drawings not to scale
Dimensions in millimetres

HBM6/8

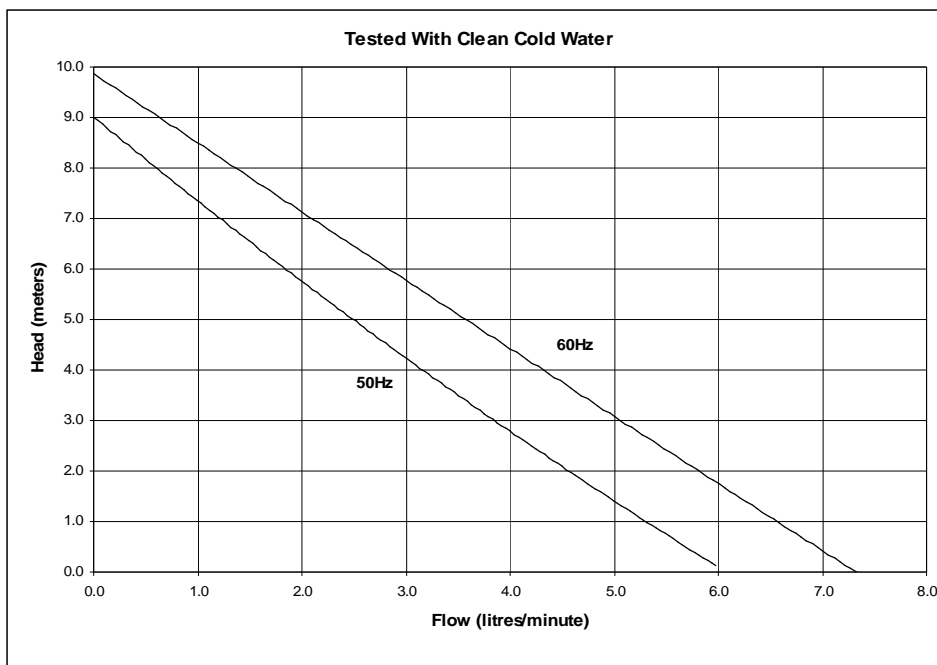


Specification

Model	Overall height (mm)	Overall length (mm)	Overall width (mm)	Weight (kg)	Max body pressure (bar)	Run-out flow rate (l/min)	Closed valve head (m)	Temp range (degC)	*Max specific gravity	Motor output (watts)
HBM6/8	75	152	109	1.5	10	50 Hz 6	9	-20 to +85	1.2	20
						60 Hz 7.2	10			

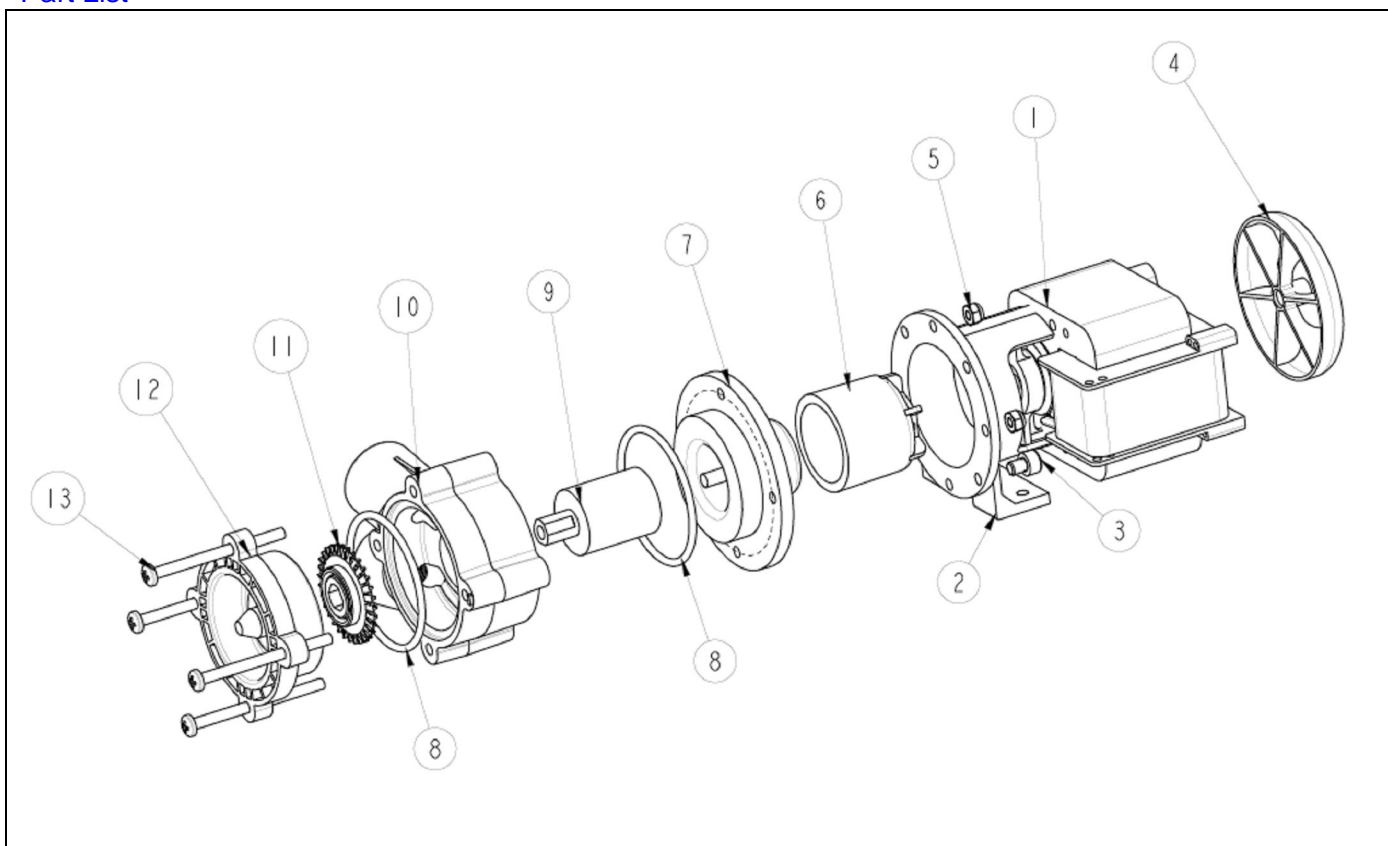
*Assuming maximum viscosity of 30cp. Refer to Totton Pumps for higher viscosities and specific gravities

Performance



Note: These magnetically coupled pumps are designed for use with clean fluids. Solids will cause jamming. Abrasives will reduce pump life and invalidate warranty. These HBM pumps are not designed to run dry. The company reserves the right change specifications.

Part List



Item Number	Description	Quantity	Part Number		
1	Motor	1	-		
2	Mounting Bracket	1	043308		
3	Screw	2	031247		
4	Fan	1	033322		
5	Nut	4	001564		
6	Drive Magnet	1	023267		
7	Spindle Housing	1	033276		
8	O Ring	2	013394 Nitrile	013291 EPDM	003265 Viton
9	Driven Magnet	1	033248		
10	Pump Body	1	043324 1/2"OD Ports	043323 15mm OD Ports	043310 3/8" ID Ports
11	Impeller	1	033323		
12	Front Cover	1	043322		
13	Screw	4	022112		

Totton Pumps Ltd.

Tel: +44 (0) 23 8066 6685

Fax: +44 (0) 23 8066 6880

Email: info@totton-pumps.comWeb: www.totton-pumps.co.uk