

Principal Applications

For applications requiring safe, leak-free, high head, continuous flow of aggressive chemicals, acids, alkalis, solvents, pure and chilled fluids.

Wetted Materials

Standard EPDM O Ring, optional Nitrile or Viton
PPS encapsulated magnet
PPS spindle housing
Alumina ceramic spindle
Graflon loaded PTFE thrust washers

Features

Manufactured in chemical resistant thermo-plastics – entirely non-metallic
Multistage versions developed for high head with low flow
Magnetic couplings provide and energy efficient thermal shield,
minimising heat transfer to the pumped fluid
IPX5 standard motor housing
Deep groove ball bearings
Variable pump body orientation and mounting foot positions

NEMP20/18
230V 1Ph 50Hz
230V 1Ph 50Hz
230V 1Ph 60Hz
230V 1Ph 60Hz

Port Details
Plain 15mm
3/8"bsp Male
Plain 15mm
3/8"bsp Male

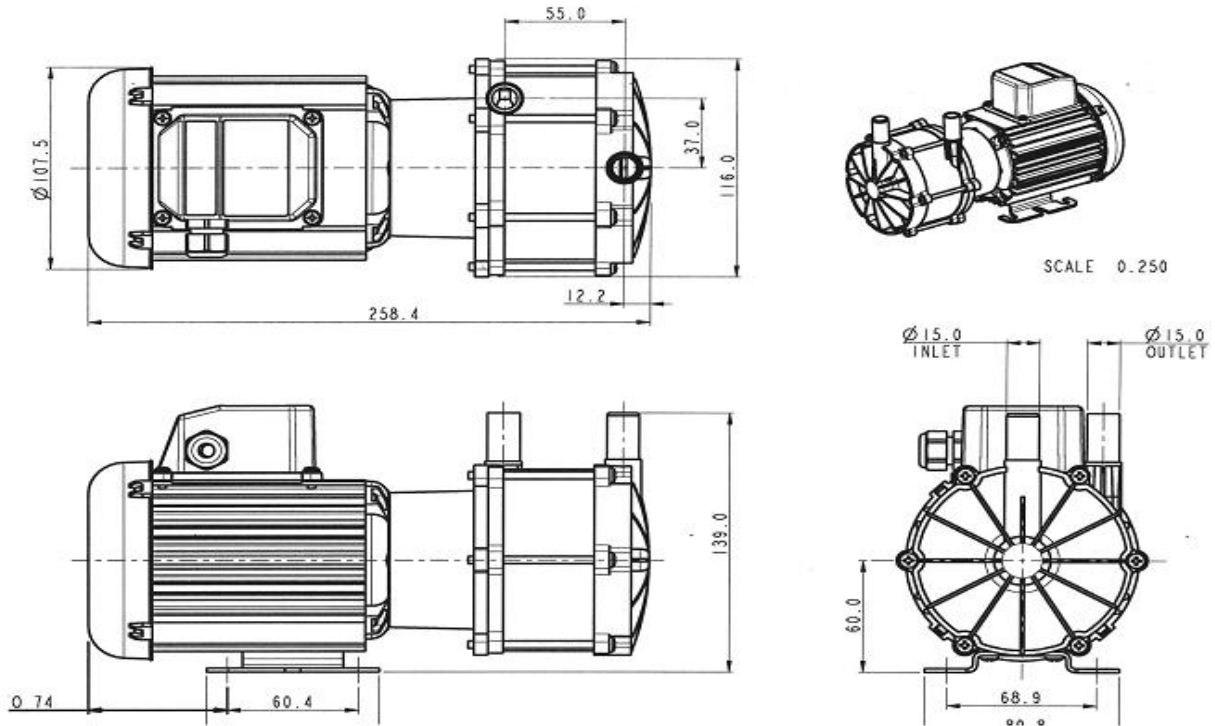
NEMP20/18
110V 1Ph 50Hz
110V 1Ph 50Hz
110V 1Ph 60Hz
110V 1Ph 60Hz

Port Details
Plain 15mm
3/8"bsp Male
Plain 15mm
3/8"bsp Male

Installation

Drawings not to scale
 Dimensions in millimetres

NEMP20/18

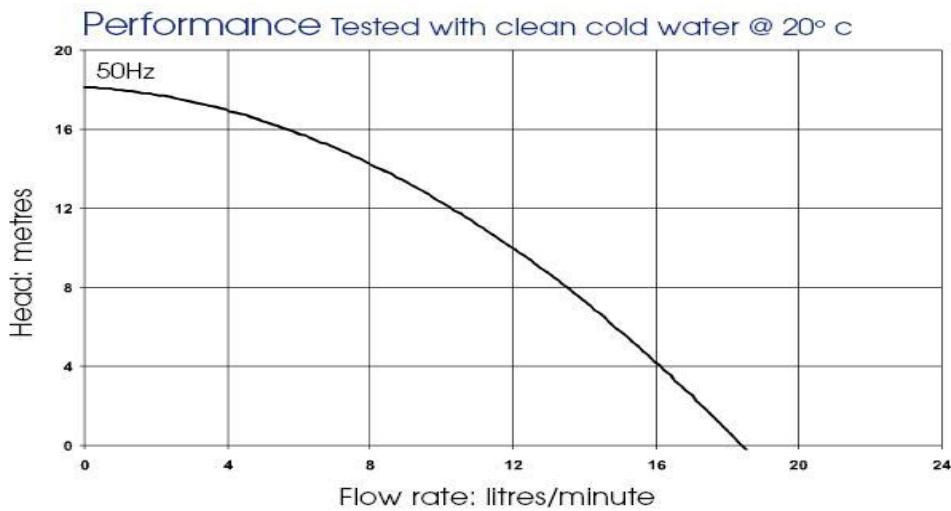


Specification

Model	Overall height (mm)	Overall length (mm)	Overall width (mm)	Weight (kg)	Max body pressure (bar)	Run-out flow rate (l/min)	Closed valve head (m)	Temp range (degC)	*Max specific gravity	Motor output (watts)
NEMP20/18	139	259	116	3.8	2.5	18.5	18	-20 to +85	1.2	90

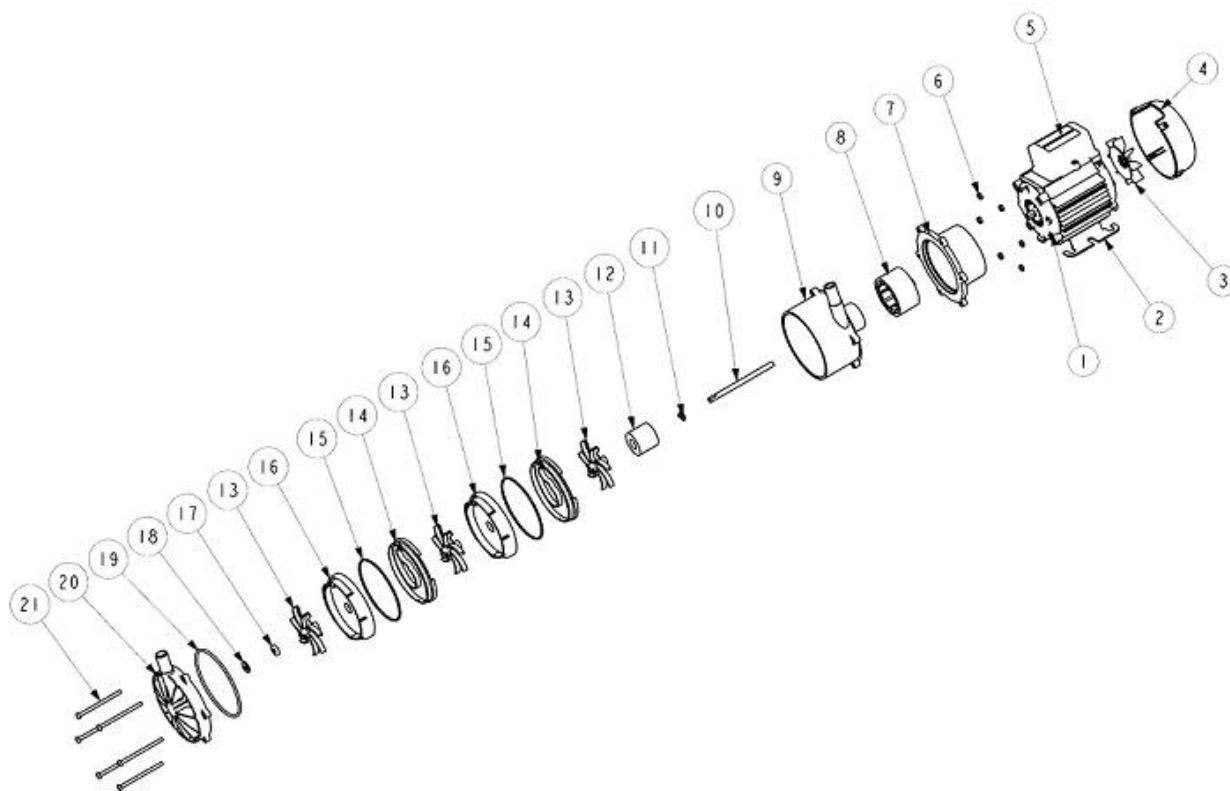
*Assuming maximum viscosity of 30cp. Refer to Totton Pumps for higher viscosities and specific gravities

Performance



NOTE: These magnetically coupled pumps are designed for use with clean fluids. Solids will cause jamming. Abrasives will reduce pump life & invalidate the warranty.
 NEMP pumps are not self priming & are not designed to run dry
 The company reserves the right to change specifications

Part List



Item Number	Description	Quantity	Part Number		
1	Motor	1	116843 (230V)		116876 (110V)
2	Mounting Foot	1	036330		
3	Fan	1	001577		
4	Fan Cowl	1	036085		
5	Terminal Box	1	036078		
6	Nut	6	001564		
7	Adaptor	1	026217		
8	Drive Magnet	1	016541		
9	Pump Body	1	016373 (plain ports)	016375 (threaded ports)	
10	Spindle	1	026205		
11	Thrust Washer	1	026208		
12	Driven Magnet	1	026203		
13	Impeller	3	026238		
14	Inter-Stage	2	016396		
15	O ring	2	022056(EPDM)	022054(Nitrile)	022055(Viton)
16	Stage Element	2	016395		
17	Ceramic Washer	1	026252		
18	Thrust Washer	1	026249		
19	O Ring	1	022059(EPDM)	022057(Nitrile)	022058(Viton)
20	Front Cover	1	016397 (plain ports)	016398 (threaded ports)	
21	Screw	6	022061		

Totton Pumps Ltd.

Tel: +44 (0)23 8066 6685

Fax: +44 (0)23 8066 6880

Email: info@totton-pumps.com

Web: www.totton-pumps.co.uk