

Principal Applications

For applications requiring safe, high head, leak-free, continuous flow of aggressive chemicals, acids, alkalis, sterile and chilled fluids.

Wetted Materials

Standard EPDM O Ring, optional Viton
PP encapsulated magnet
PP pump housing
PPS spindle housing
Alumina ceramic spindle

Features

Manufactured in chemical resistant thermo-plastics – entirely non-metallic
Pump head can be connected in series for high head applications
Can pump two dissimilar fluids simultaneously
Magnetic couplings provide an energy efficient thermal shield,
minimising heat transfer to the pumped fluid
IP54 standard motor housing. IP55 version available.
Deep groove ball bearings

NEMP50/11

230V 1Ph 50Hz
230V 1Ph 50Hz
230V 1Ph 60Hz
230V 1Ph 60Hz

Port Details

Plain 15 mm
3/8" BSP M
Plain 15 mm
3/8" BSP M

NEMP50/11

110V 1Ph 50Hz
110V 1Ph 50Hz
110V 1Ph 60Hz
110V 1Ph 60Hz

Port Details

Plain 15 mm
3/8" BSP M
Plain 15 mm
3/8" BSP M



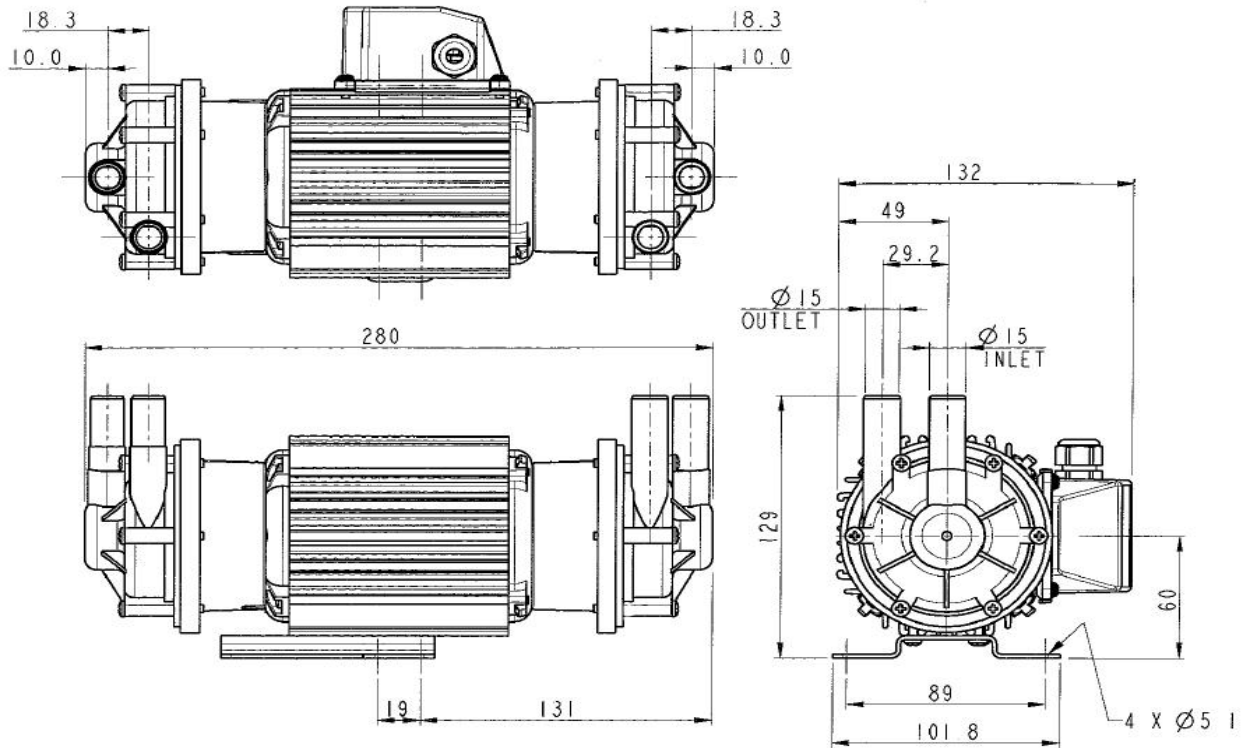
Engineered for life



Installation

Drawings not to scale
Dimensions in millimetres

NEMP50/11



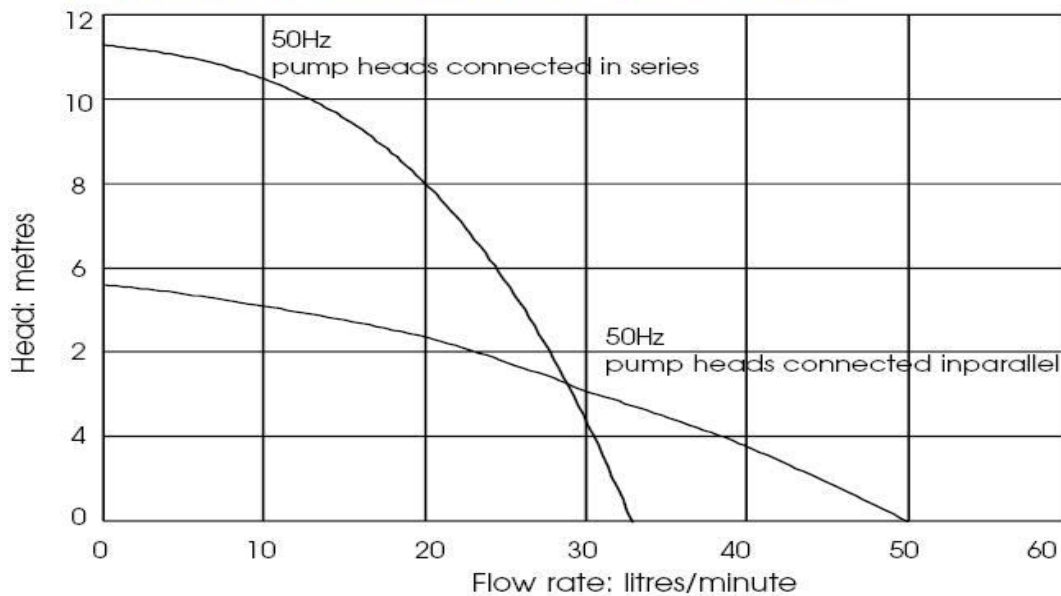
Specification

Model	Overall height (mm)	Overall length (mm)	Overall width (mm)	Weight (kg)	Max body pressure (bar)	Run-out flow rate (l/min)	Closed valve head (m)	Temp range (degC)	*Max specific gravity	Motor output (watts)
NEMP50/11	130	280	132	3.8	1.4	50	11	-20 to +85	1.2	100

*Assuming maximum viscosity of 30cp. Refer to Totton Pumps for higher viscosities and specific gravities

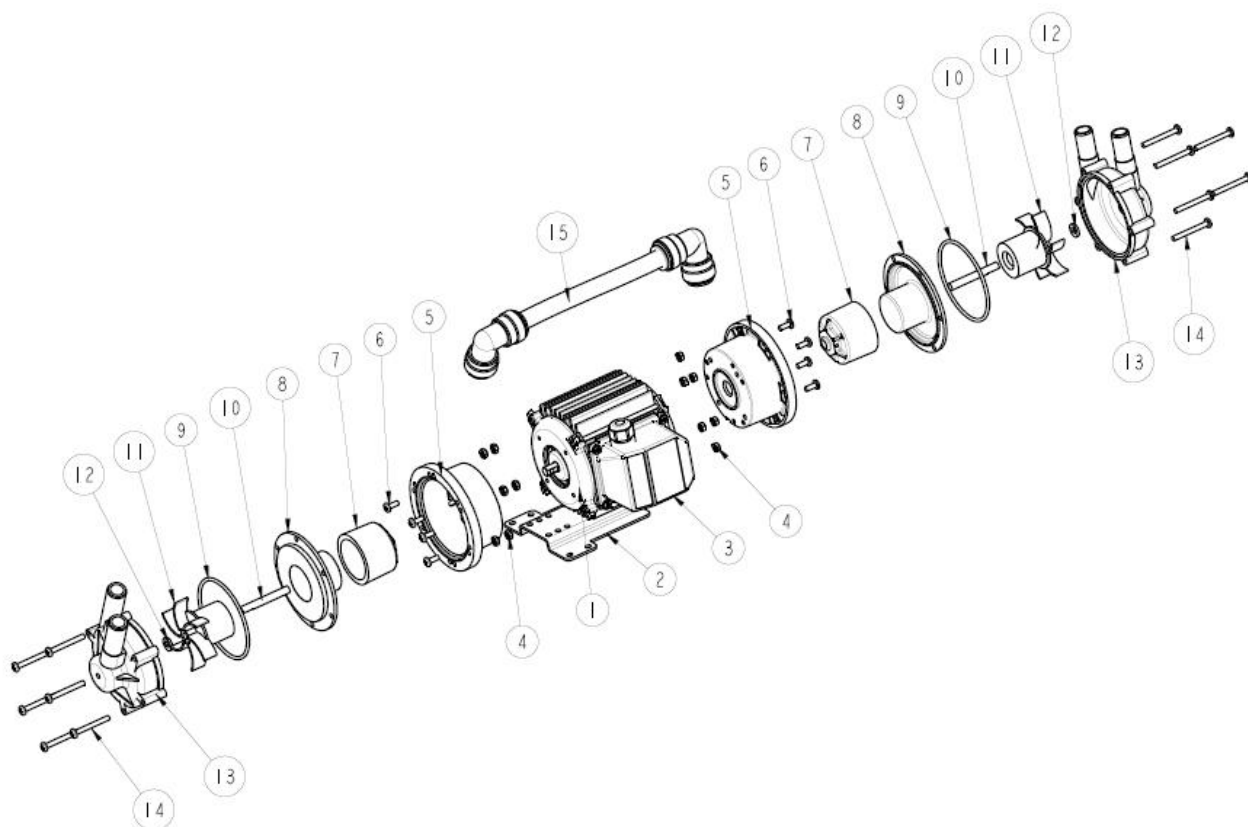
Performance

Performance Tested with clean cold water @ 20° c



NOTE: These magnetically coupled pumps are designed for use with clean fluids. Solids will cause jamming. Abrasives will reduce pump life & invalidate the warranty. NEMP pumps are not self priming & are not designed to run dry
The company reserves the right to change specifications

Part List



Item Number	Description	Quantity	Part Number		
1	Motor	1	116853 (230V)		
2	Mounting Foot	1	036329		
3	Terminal Box	1	036078		
4	Nut	12	032105		
5	Adaptor	2	036324		
6	Screw	8	022163		
7	Drive Magnet	2	006287		
8	Spindle Housing	2	016311		
9	O Ring	2	013290(EPDM)	003398(Nitrile)	021056(Viton)
10	Spindle	2	006244		
11	Impeller	2	016355 (50Hz)	026214 (60Hz)	
12	D Washer	N/R	-		
13	Pump Body	1 ea	016302 (LH plain ports)	016303 (RH plain ports)	
			036353 (LH threaded ports)	036354 (RH threaded ports)	
14	Screw	12	022115		
15	Cross Bar Assembly	N/R	-		

Totton Pumps Ltd.
 Tel: +44 (0)23 8066 6685
 Fax: +44 (0)23 8066 6880
 Email: info@totton-pumps.com
 Web: www.totton-pumps.co.uk